



Majesco Intelligent Solutions

A comprehensive portfolio of P&C and L&AH intelligent solutions that empowers the entire insurance value chain and ecosystem, harnessing advanced technologies, robust capabilities, and embedded analytics to drive operational efficiency, effectiveness, and innovation.



Majesco Intelligent Solutions

Benefits

- Optimize Business Operations **01**
- Increase Productivity **02**
- Accelerate Growth **03**
- Improve Decision Making **04**
- Decrease Costs and Improve TCO **05**
- Enhance Customer Experiences **06**

Features

- Native cloud, open API, headless, microservices, and embedded analytics **01**
- Embedded BI, AI/ML and the first GenAI assistant, Majesco Copilot **02**
- Easy access to all data in real-time in data lake house **03**
- Robust out-of-the-box capabilities, best practices and templates **04**
- Seamless, automated upgrades **05**
- Pre-integrated Ecosystem **06**



Technology that drives transformation, optimization and innovation

Majesco's next-gen, native-cloud solutions are fully integrated with Majesco Copilot, the first and only, GenAI assistant that delivers enhanced productivity, operational efficiency, and effectiveness. By providing access to all data in real-time and harnessing embedded business intelligence, AI/ML models and GenAI, Majesco empowers organizations to make informed decisions swiftly and efficiently, driving business growth, optimization, and enhancing profitability.

“In the rapidly evolving world of insurance technology, Majesco has not just kept pace but is ahead of the pack. Majesco Copilot embedded in all solutions is an impressive accomplishment and clear indication that they are committed to innovation in the insurance industry. Their holistic data strategy including the data lakehouse, embedded business intelligence, embedded AI/ML models, access to partner AI/ML models and GenAI is a leap forward that others have not yet accomplished. This leadership and foresight in embracing cutting-edge technology positions Majesco to be a strong technology partner to insurers in their transformation journey.”

Martina Conlon

Head of Insurance Insights at Datos-Insights

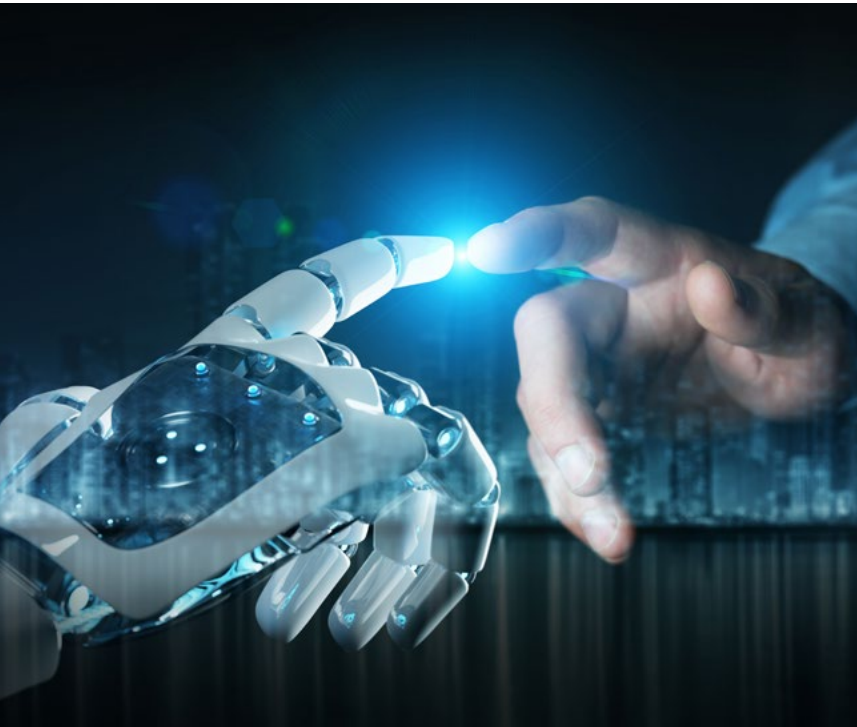
Majesco Intelligent Core Solutions for P&C and L&AH

Policy, Billing and Claims empower intelligence with access to all operational data in real-time and are embedded with data and analytics capabilities including BI, AI/ML models, and GenAI that enhance decision-making, productivity, and operational efficiencies.

Embedded GenAI refines the end-to-end business process with advanced analytics that anticipate trends, offer business insights for decision-making, and optimize operations.

Benefits

- 01 Robust, no-code configuration engine
- 02 Ready-to-use content, product templates, rules, and workflows for rapid innovation and speed to market
- 03 Access to all operational data via data lake
- 04 Pre-configured business intelligence dashboards and reports in the workflow
- 05 Pre-integrated proprietary AI/ML-driven models from Majesco and partners
- 06 Deeply integrated GenAI capabilities on every screen
- 07 Digital ready with personalized and engaging experiences



Majesco Data & Analytics

Access to all your operational data in real-time with the Cloud-Native Data Lakehouse and embedded analytics including Business Intelligence, AI/ML models including Property Intelligence, Litigation Intelligence, and GenAI with Majesco Copilot to accelerate insights, take action and simplify insurance complexity at any point of the value chain.

Benefits

- 01 Built-in holistic data and analytics strategy and platform
- 02 Seamlessly unite internal operation data with external data into a unified data lake
- 03 Empower your enterprise with across-the-board data access
- 04 Leverage built-in data quality measures and business validation rules
- 05 Equipped with ready-to-use reports and dashboards
- 06 Leverage advanced AI/ML models for business insights and decisions
- 07 Perform tasks 10-15x faster with less effort to improve expense ratios, decrease per unit costs, and optimization with GenAI



Majesco Distribution Management

Experience streamlined and simplified onboarding and compliance, robust compensation management, and expanded distributor performance and relationship management. Leverage robust tracking and management tools for improved oversight and management of channel activities leading to more effective distribution operations, increased ease of doing business, and optimized channel opportunities.

Benefits

- Reduce time to market **01**
- Manage multiple channels and all lines of business on one platform **02**
- Robust channel management with unlimited hierarchies **03**
- Data driven with real-time analytics, advanced reporting and AI/ML tools **04**
- Stay on the right side of regulations **05**
- Seamless digital experience with a robust portal **06**

Majesco Digital Solutions

Next-generation, robust, and visually appealing digital portals for agents, underwriters, employees, customers, and claims adjusters that seamlessly integrate with our Majesco Intelligent Core Suite. The portals are designed to enhance user experience with intuitive interfaces and personalized experiences, and optimized workflow.

Benefits

- Create intuitive, digital experiences that enhance user experience **01**
- Leverage dynamic data sources to drive innovation **02**
- Seamlessly integrate with our next-gen ecosystem solutions **03**
- Enhance mobile accessibility with on-the-go access **04**
- Empower real-time decision-making **05**

Majesco Loss Control

An advanced AI-driven platform with fully featured, configurable loss control management that automates the survey lifecycle from creation to completion with an ecosystem of tools including self-survey and video leveraging Majesco's contributory database of 16+ million property surveys with 200+ million photos tagged to the risk - the most robust dataset combined with AI/ML for intelligent loss control results.

Benefits

- Automate and streamline every step of survey lifecycle **01**
- Use data intelligent to spot emerging risks **02**
- Utilize property risk assessment models with AI-driven data analytics **03**
- Access the industry's largest set of survey data **04**
- AI-driven video risk assessments **05**
- GenAI-powered speed and accuracy **06**



Intelligent Sales and Underwriting Workbench

An AI-driven platform for group, benefits and worksite insurers. Its production-proven, best-of-breed sales and underwriting workbench provides configurable components. The multilingual solution provides configurable components for quoting, rating, proposals, enrollment and automated renewals for all benefit products and group sizes.

Benefits

- Leverage AI to optimize processes & increase profitability **01**
- Reduce quote times with advanced productivity tools **02**
- Benefit from Majesco Policy for L&AH to drive speed to market **03**
- Transform the customer lifecycle from onboarding to enrollment **04**
- Adopt purpose-built enrollment solution for digital experiences **05**
- Use predictive analytics for alternative renewal recommendations **06**

Awards and Recognitions



Ranked #1 in Quadrants' P&C and L&AH SPARK Matrix



Datos Dominant for P&C Policy, Billing, Claims



Datos Dominant for LA&H Policy and Claims

CELENT

Celent Luminary for P&C Policy, Billing and Claims

CELENT

Celent Technology Standout for L&AH Policy

CELENT

Celent Technology Standout for DM



Majesco Digital1st Platform Leader by Everest Group in Low-code Technology Providers in Insurance – Products PEAK Matrix Assessment



Named in IDC's 2023 FinTech Rankings, Earns Top 100 Spot



Secures Coveted Spot on InsurTech 100 List

